



MEC CAD **Partner for Successful Projects**

Multidirectional Scaffolding for facade maintenance work in PARIS

CATARI operates on the Metallic Equipments production activity, designing and manufacturing solutions for the Building, Construction and Industrial Maintenance industries.



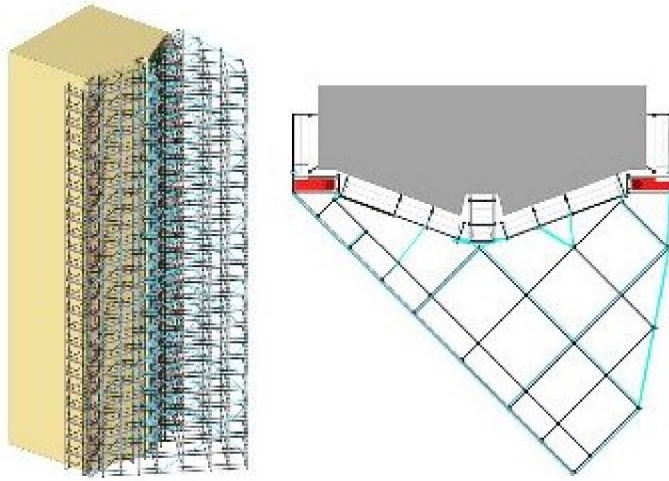
Location: Bvd Victor Hugo, Paris (France)

Type of scaffolding: Universal System

Type of works: façade maintenance

Peculiarities: this facade supported an advertising canvas all along from top to bottom, which was the main obstacle of this project, due to the adversity of the the wind's impact on the canvas (sail effect).

Details: height 50,0m, width 17,0m, volume 5500m³



For this Scaffolding project **CATARI** used PON CAD software by MEC CAD.