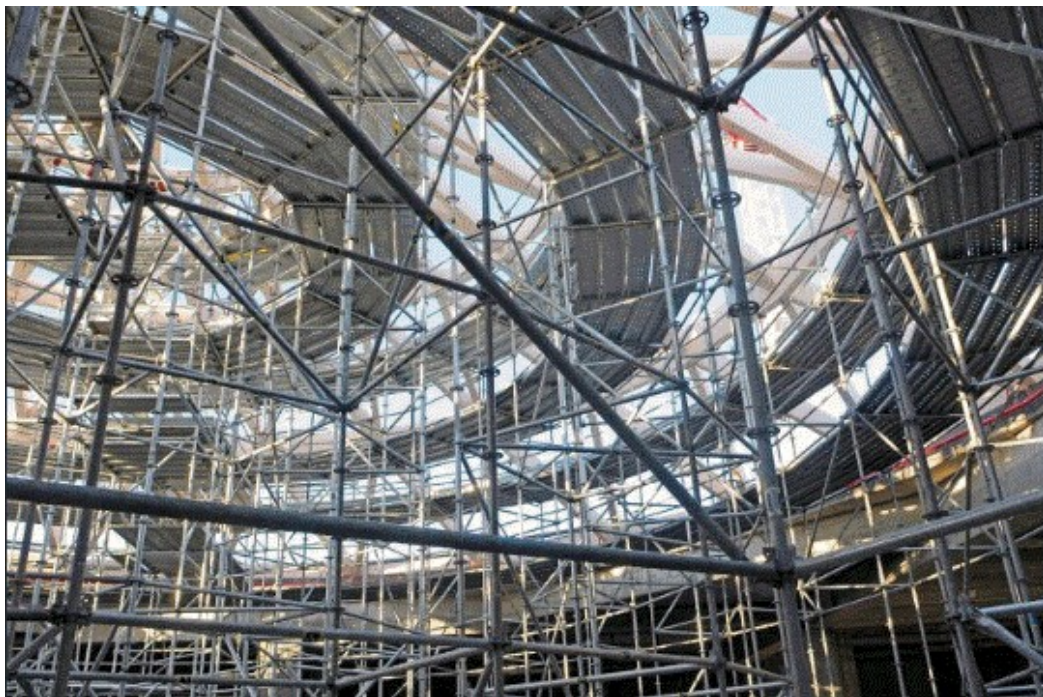




## Partner of successful projects

### Scaffold designed with PON CAD software

METALMONTAGGI installed the Scaffolding for the shoring of a Geodesic Dome



**Subject:** Geodesic Dome

**Location:** "Nave de Vero" Mall - Marghera (Italy)

**Objective:** Metalmontaggi installed the scaffolding required for the shoring of a Geodesic Dome.

**Type of scaffolding:** MP Multidirectional Pilosio

**Difficulty:** the shape and the peculiarities of the structure required a custom scaffolding solution

**METALMONTAGGI** is an experienced company specialized on engineering and providing scaffolding for civil and maintenance projects. [www.metalmontaggi.com](http://www.metalmontaggi.com)

