

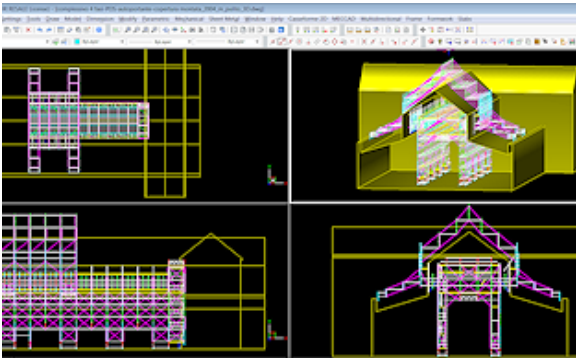
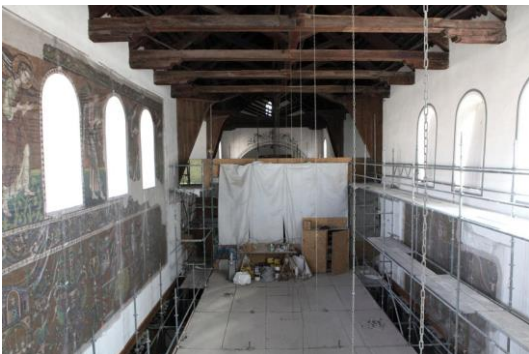
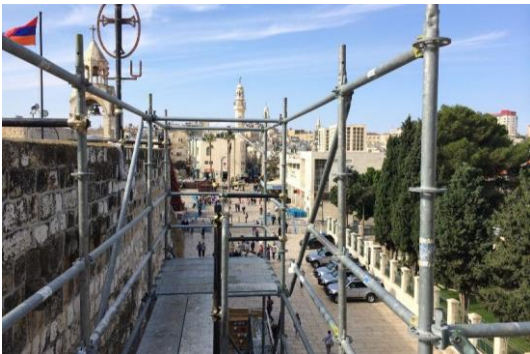


The "rebirth" of the Church of the Nativity in Bethlehem

Project Name: Church of the Nativity in Cisgiordania, Bethlehem

Main Contractor: Piacenti Spa - CMW Engineering srl





Technical Description: The Restoration of the Church took place in May 2013 and was done with innovative technical implications since the self-supporting multi-directional scaffolding structure had very few points of support on the ground.

The plan was designed and projected with PON CAD software. Having the advantage of quick assembly and disassembly, it was yet structurally sound and could guarantee safe access to the cave for the specialized workers and visitors during all the phases of the work at the construction site.

The structure included internal double platforms at 9 and 12 mt high with a 6.5 mt span between the two supporting walls. This internal structure was directly connected to the external one through the windows of the church. The scaffolding systems were constructed with modular sections. The two 6 mt long “arms” on each side of the structure transferred the weight of the multi-directional waterproofing and fire-retardant PVC covering (able to support snow and winds up to 120 km/h) on to the perimeter walls. These were the only possible anchors allowed.



[CMW Engineering](#) operates mainly as a partner for consulting and implementation of projects, design, rental and sale of structures and scaffolding for every need. Civil and industrial buildings, maintenance of installations, stages and coverings for shows and events.



Use PON CAD + STRUCT
to design and verify your scaffolds!

[Information Request](#)

PON CAD software for successful Companies
Follow us!

