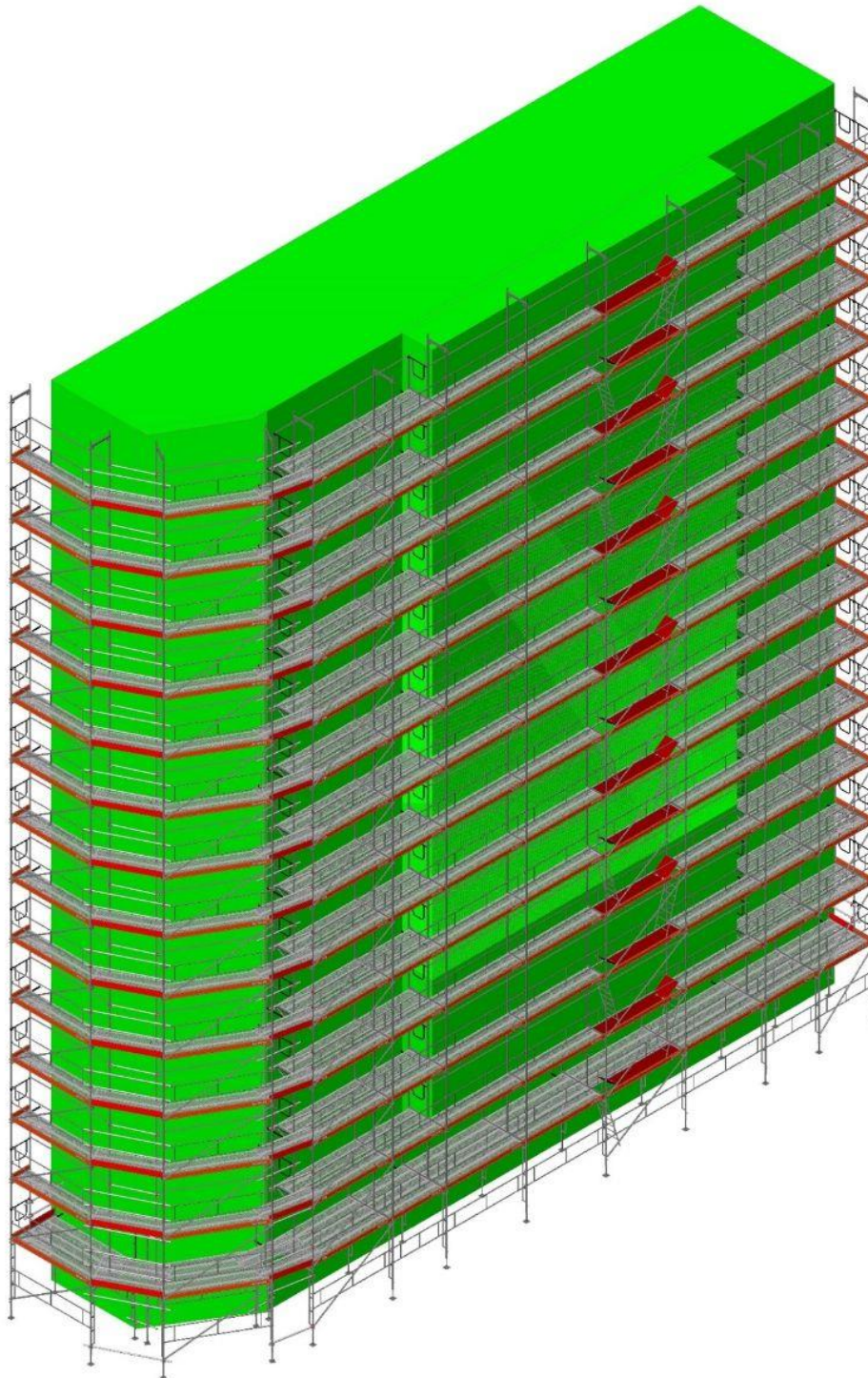




Façade Scaffolding design by CATARI with PON CAD in Madrid





Project: building in Gran Vía 69 – Madrid

Task: renovation of façade

Type of Scaffolding: Frame FA-48

Measures: 30m perimeter x 30m height (900m²)

Difficulty: protruding (terrace) and non-linear geometry

Description: in order to carry out the renovation work of the facade of the building it was decided to use the Catari FA-48 frame scaffolding system designed according to European standards 12810-1 in compliance with the European standard une-76-502-90 and the HD1000 Harmonization Document. This scaffolding system was chosen for easiness and speed of assembly combined with safety, flexibility and versatility characteristics.

The key to its functional choice was the competitive price and the necessity to mount a 1.50 m wide passage frame to allow pedestrian crossing.

[CATARI ESPAÑA](#) is part of CATARI GROUP, which manages production, projection and metallic tools from 1979.



[Request Information](#)