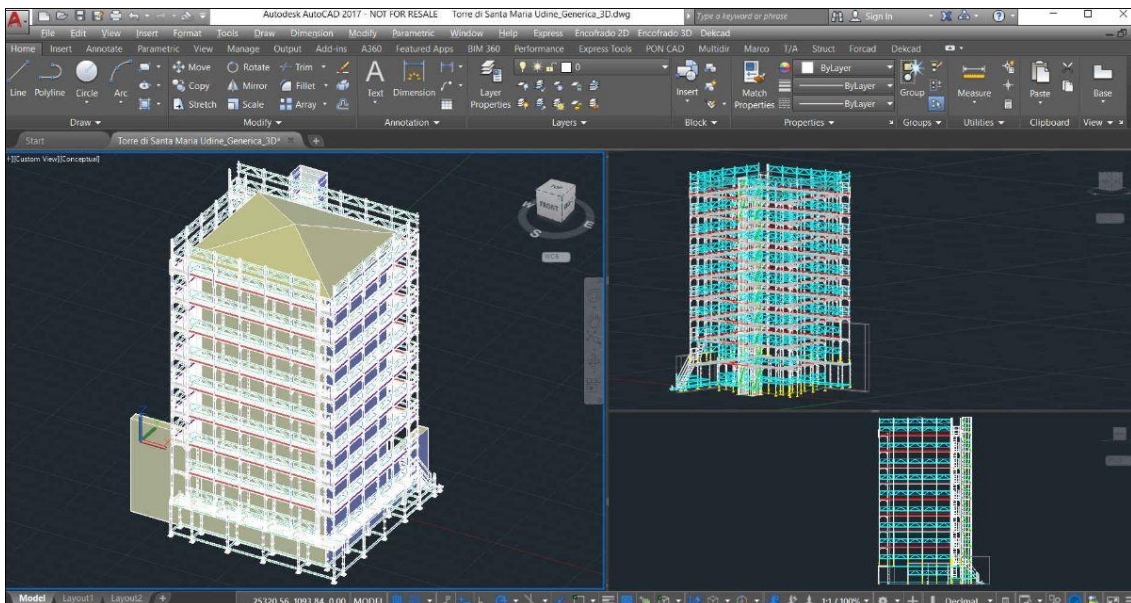
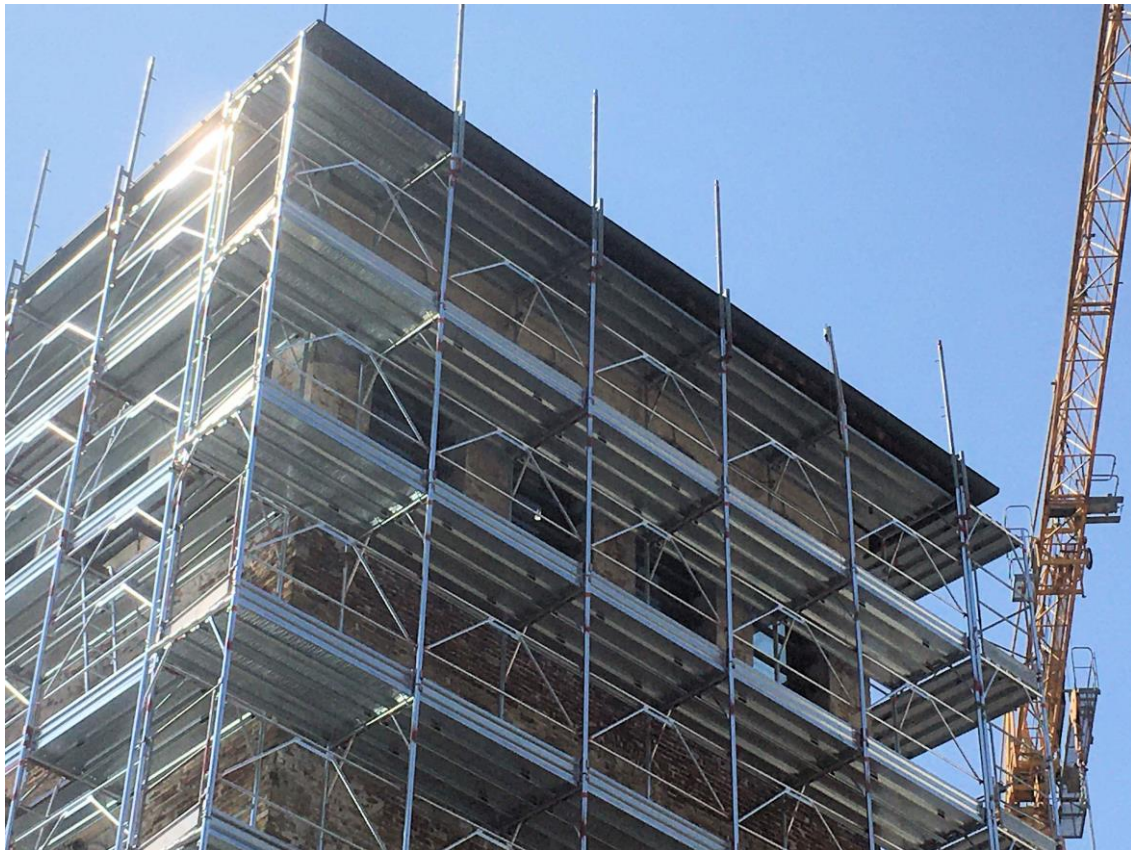




Scaffolding for Maintenance of historical Tower. Project designed with PON CAD software



Project:

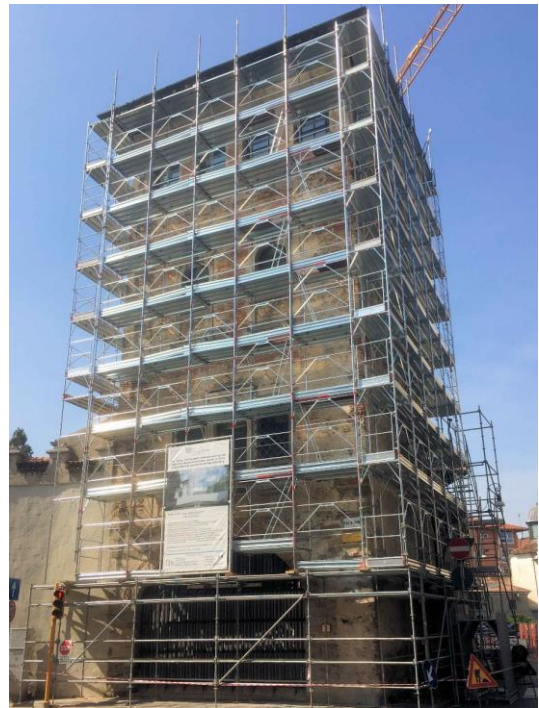
Maintenance of Santa Maria Tower - Udine, Italy.

Scaffolding system:

Multidirectional MP Pilosio and T5 Frame Marcegaglia

Description:

The scaffolding was provided to carry out the restoration and structural recovery of the Tower made necessary for a change of use. The works include the demolition of the external staircase and the realization of a new access for the construction of a service lift. The first level of the scaffold consists of multidirectional for 20 mt on the side of the road and 20 mt on the sides of the courtyard, integrated with a 0.60 mt aluminium ladder. The second level is a T5 Marcegaglia. Total area of 800 m2 and equipped with anti-dust net.



[Explore the 3D model](#)

RAS PONTEGGI
ALLESTIMENTO - NOLEGGIO - PROGETTAZIONE

[RAS PONTEGGI SRL](#) is an Italian company dedicated to the construction and design of scaffolding, the supply and assembly of hoists and cargo lifts for construction sites and the design and production of light carpentry items.

