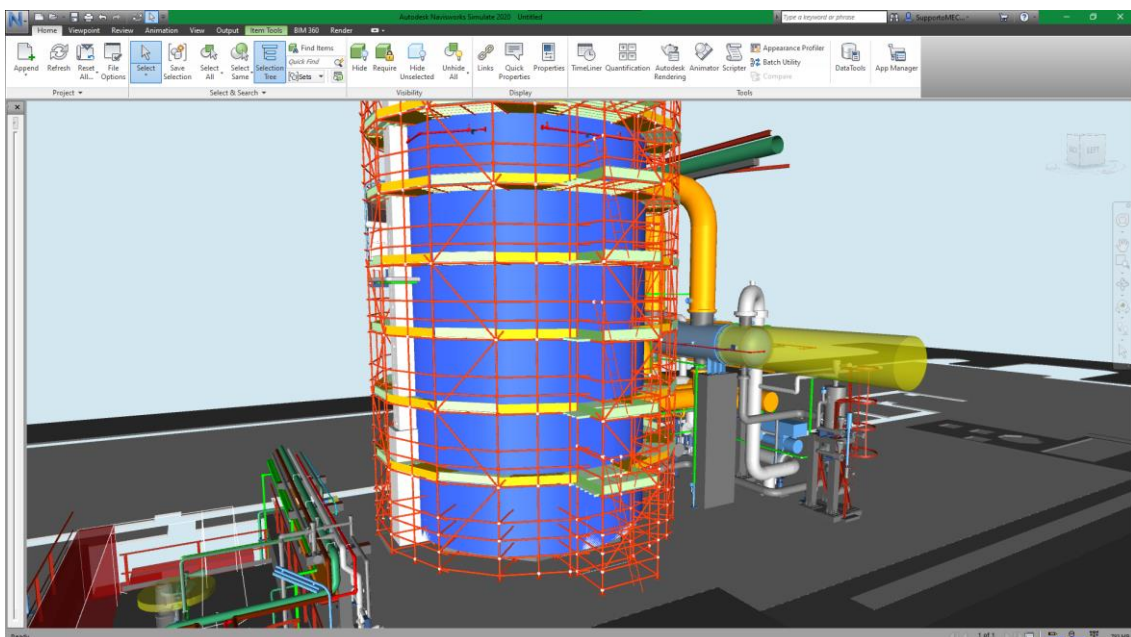
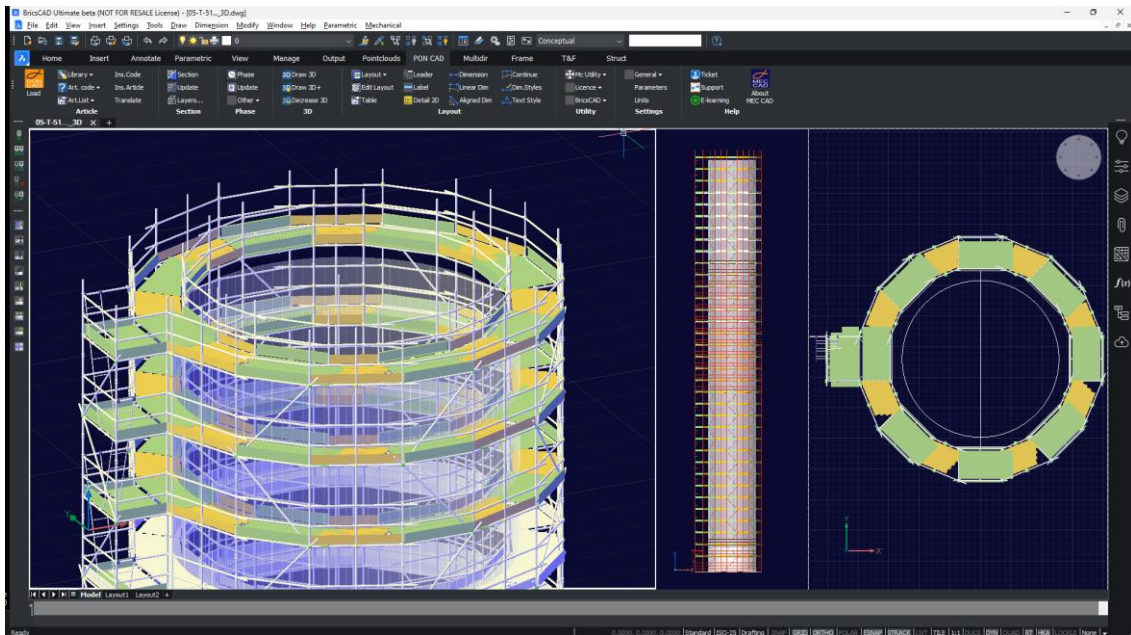




## Cuplock scaffolding designed by PETROJET for the expansion of Midor Refinery in Egypt



**Name of the project:** Midor Refinery Expansion

**Place of work:** Alexandria, Egypt

**Scaffolding system:** Cuplock

**Height:** 70.00m

**Inner diameter:** 6.00m

**Volume:** 1500 m3

**Weight:** 105.00 tons

**Technical details:**

Thermal insulations & piping instalment works for the tower needed a 70m high access from the ground. A 3D model of the tower was imported into **PON CAD software** to draw the scaffolding around and loaded into Naviswork® in order to check clashes with new piping and other equipment.



"We've been using PON CAD for more than 2 years to draw 3D scaffolding for buildings, towers, pipe racks, equipment and all scaffolding types (cup lock, ring lock, T&F, suspended, unit beam, ladder beam." Petrojet's design team.

PON CAD

Use PON CAD  
to Project your Scaffolding

[Request a trial](#)

